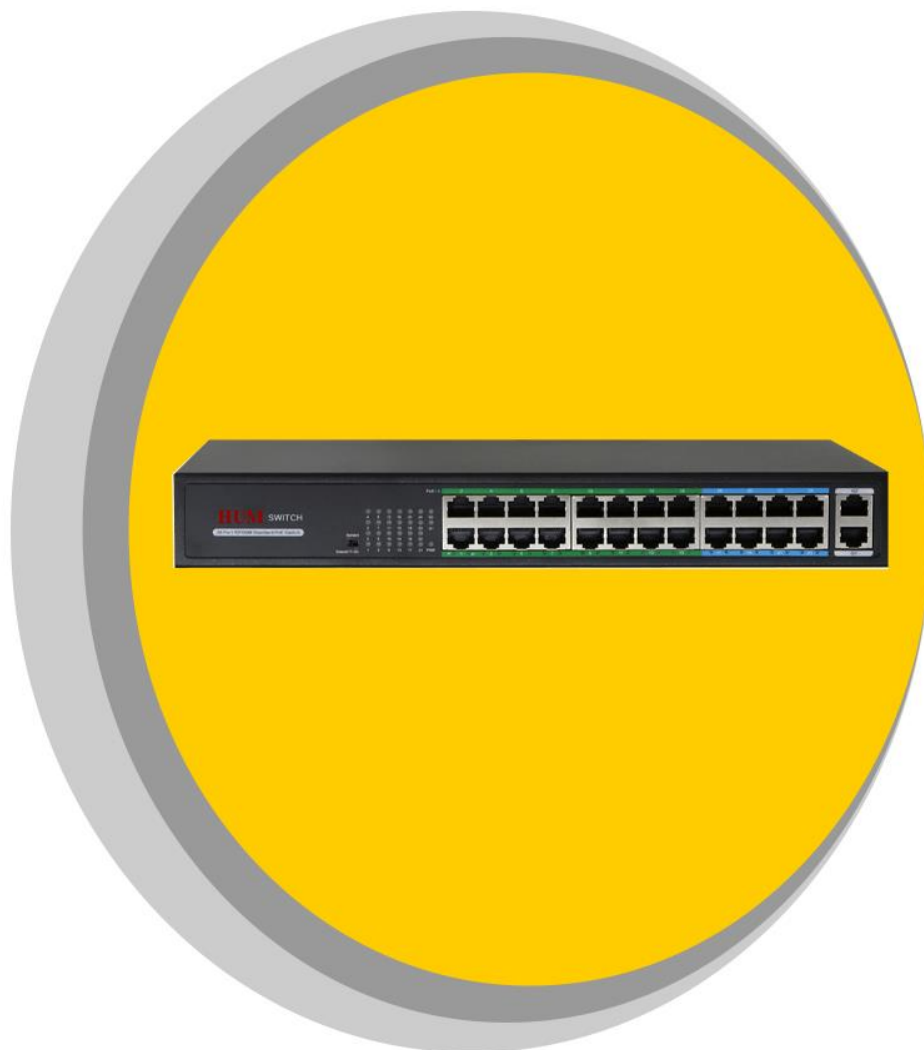




Smart Architecture of Espadana

Designing, Production, Customization and Consultant Service
in Network and Fiber Optic System



Technical Specification

HUM-PE24E-2GC

24 ports PoE 10/100Mbps switch & 2 Up-link Gigabit RJ45 ports





Product Description

- Reliable power supply for network surveillance cameras
- 24 x 10/100Mbps Ethernet ports with RJ45
- auto sensing capability
- 2 x Up-link Gigabit, RJ45
- Compliant with IEEE 802.3af/at
- Port auto-flip such as Auto MDI/MDIX
- Provide full duplex based on IEEE802.3x and half duplex based on Backpressure
- Total Permissible PoE power: 250W
- Adaptive with store -and -forward architecture
- Economic and smart PoE switch

Full Description

This smart and economic PoE Switch (**HUM-PE24E-2GC**) make both Data and Power transmission possible over a single cable. All the Ethernet ports are capable of connecting with 10/100Mbps and the uplink port for this switch is two 1000 RJ45 Ports. PoE is available on all PoE-signed ports using IEEE 802.3af/at standard. Auto-sensing technology, used in this device, let the users to connect both PoE and non-PoE devices to **HUM-PE24E-2GC** with no consideration or hesitation. Additionally, this manageable PoE Switch can recognized automatically PoE demands of devices and automatically disconnect the power when PoE device is disconnected or turned off. It is also capable of recognizing speed, duplex, and cable type using Auto Uplink™.

The high quality of components let the **HUM-PE24E-2GC**, have superior performance in stability and environmental adaptability. The product designed to be resistant and to corrosion and electromagnetic interference. Power adaptor, installed within the product, provide a reliable and low noise source of power for this device.



Application

IP cameras monitoring systems and transmitting systems
 Access points wireless systems and transmission data
 IP telephone, virtual PABX and intelligent unmanned systems
 Management and support Intelligent transportation supervisory (ITS)
 Monitoring TV medical and management
 School, campus, and... monitoring and remote control

Technical Specification

Product	HUM-PE24E-2GC	
Transfer Mode	Store-And-Forward	
Performance		
Capacity in Millions of Packets per Second (64-byte packets) (Buffer Memory)	4M	
Switching Capacity in Gigabits per Second (Gbps) (Bandwidth)	52Gbps	
Forwarding Rate in Millions of Packets per Second (Mpps)	38.69Mpps	
MAC Size	8k	
Interface		
Ports	24×PoE 10/100Mbps ports 2×Up-link Gigabit RJ45 ports	
Supported Network Protocols and Standards		
IEEE 802.3i 10BASET IEEE 802.3u 100BASETX IEEE 802.3x IEEE 802.3af/at PoE protocol on 1-24 Ports IEEE802.3ab 1000Base-T		

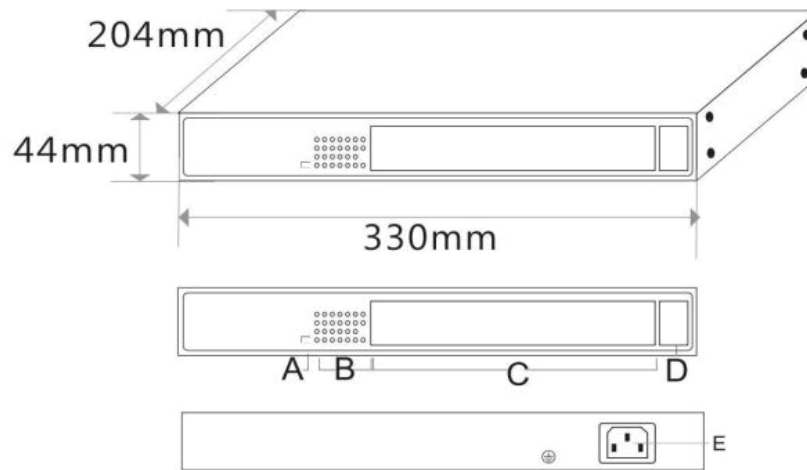
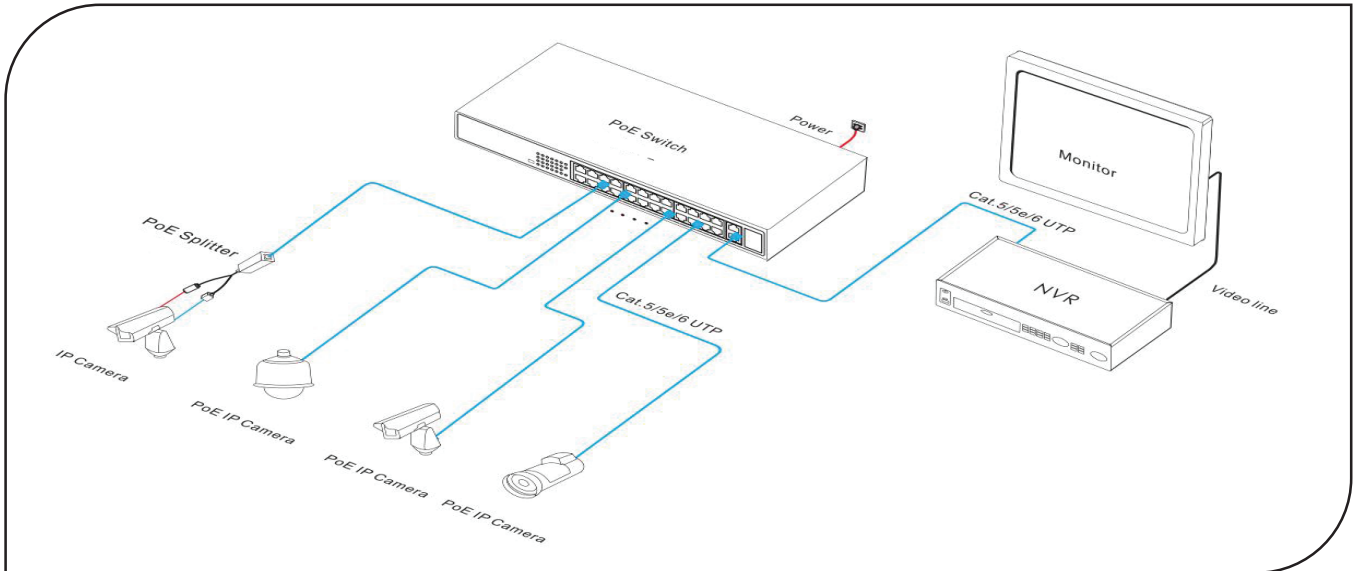


Status LEDs	Power Supply LED, Connecting and PoE Working Status LEDs
Power	
Output	Total: 350W Average/Port: 15.4 W
Input	AC100-240V 50/60Hz (Depending on the country)
Consumption	30 W on standby/ 250W on Full load

Certificate	
Radiation	CE mark, commercial, FCC Part 15 Class B VCCI Class B, EN 55022 CISPR 22 Class B
Safety	CE Mark, commercial, CE/LVD EN60950
Environmental aspects	
Dimensions	330*204*44mm<3Kg/ <3.5Kg
Working Environment	Operating Temperature: 20°~ 55°C Storage Temperature: 40 ~ 75 C; Humidity: 5% ~ 90%, non- condensing; Storage Humidity: 5 % ~ 90 %, non- condensing;
Anti-surge / Protection Level	Anti-surge:4KV 8/20us; Protection Level-IP30



Product Application Display



- A. Multi-functional switch
- B. PoE work indicator
- C. 24*10/100M PoE ports
- D. 2*10/100/1000M uplink RJ45 ports
- E. Power input port AC100-240V, 50/60Hz

Technical Specification of:

HUM -PE 24E -2GC